

CUSTOMER STORY

Cutting Payroll Processing Time by **75%** with Greenshades

Overview

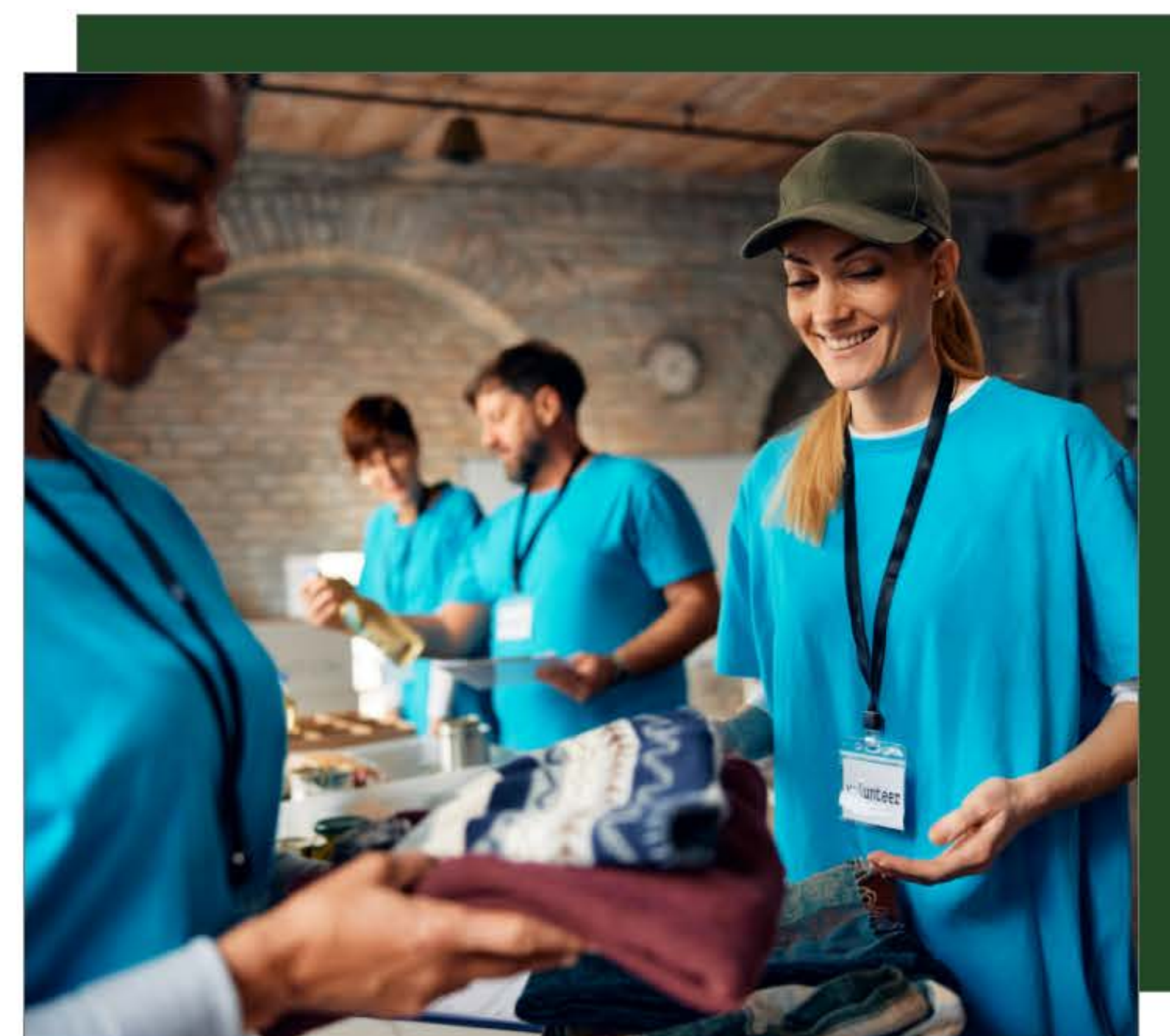
Agape of Appleton provides housing and services to people with disabilities, operating 16 locations for Group Homes, Adult Family Homes, and Supported Apartment living, with their corporate office in Appleton, WI. **When they learned about the impending changes and uncertain future of Microsoft Dynamics Great Plains (GP), Agape faced a crucial decision for their business's future.**

After evaluating multiple options to meet their payroll/HR and ERP needs, the team decided that adopting Greenshades payroll was the ideal first step. **By migrating payroll first, they aimed to future-proof their business, leveraging a solution that integrates with their current and future ERP systems.**

Greenshades' Solutions

In the early 2000s, Agape of Appleton started using Greenshades for Tax Services to create SUTA wage files. In 2020, they added the benefits module to streamline Open Enrollment after their insurance company's system was discontinued. When issues arose with their timekeeping system, they switched to Greenshades timecards. **In 2024, Agape transitioned from the outdated GP payroll module to Greenshades Payroll, fully embracing the complete suite of Greenshades solutions:**

- **Payroll & HR Plus Platform**
- **Payroll Time Entry**
- **Green Employee**
- **Enhanced HR**
- **Onboarding**
- **Tax Filing Center/Year-End Forms**



Results

Agape of Appleton overcame significant operational challenges by leveraging Greenshades' comprehensive and agile solutions.

- **Ensuring Business Continuity:** With the anticipated shifts in support for Dynamics, Agape needed a reliable solution to support their future ERP and payroll requirements.

Solution: Greenshades' flexible solution adapts to Agape's dynamic business needs, while **ensuring seamless integration with their current GP system and their future ERP of choice.** This adaptability allows Agape to keep their operations running smoothly while optimizing payroll processes.

- **Improving Overall Business Efficiency:** The outdated payroll module within GP was inefficient, consuming valuable resources and time.

Solution: Greenshades' intuitive and user-friendly payroll solution **reduced processing time from nearly two full days to just half a day.** This significant time saving allowed Agape to reallocate resources more effectively, greatly enhancing overall business efficiency.

- **Reducing Manual Workarounds:** Managing timekeeping, payroll, and benefits with three separate, non-integrated systems was cumbersome and time-consuming for Agape's team.

Solution: By adopting Greenshades' integrated suite, Agape drastically **reduced manual paperwork, streamlining HR, benefits, and payroll tasks.** This allowed the HR department to focus on more strategic activities and significantly lessened the administrative burden on staff.

- **Enhancing System Accuracy:** Inflexible systems created accuracy issues for Agape, particularly in managing multiple staff positions, tracking hours worked, and handling Open Enrollment.

Solution: Greenshades improved Open Enrollment efficiency, simplifying the process of compiling and submitting information for the insurance company census. The enhanced timesheets feature provided better visibility of hours worked and allowed the team to assign multiple positions for staff. **This enabled management to make corrections and approve payroll more quickly and accurately.**

“

Greenshades has been a trusted partner for Agape of Appleton since the early 2000s when we first started using their tax services. Over the past five years, we've expanded our use of Greenshades to include their full suite of solutions, significantly streamlining our payroll and HR processes, reducing manual paperwork, and making the platform accessible even for our non-tech-savvy staff. Greenshades' ongoing support and user-friendly design have been instrumental in enhancing our operational efficiency and overall productivity.

”

- **Gia Mathos Lamm**
Chief Financial Officer